

Ashmore Dana USD Equity Nusantara

EQUITIES

Fund facts Information at 31.12.2024.

Fund size USD 2.7 million	Fund inception date 18 May 2015	Fund effective date 24 February 2015	Unit Price \$1.12	Benchmark JCI (in USD)
-------------------------------------	---	--	-----------------------------	----------------------------------

Investment Manager

PT Ashmore Asset Management Indonesia Tbk is an Investment Manager Company whose majority shares are owned by the Ashmore Group. The Ashmore Group is an investment management firm focused on developing countries with more than 20 years of experience and consistent historical performance across various market cycles. Our existence is strengthened by the establishment of our branches in local markets such as Colombia, India, Saudi Arabia, Singapore, Japan, Peru, UAE, United States of America, and Indonesia. PT Ashmore Asset Management Indonesia Tbk was established in 2012 in Jakarta, licensed and supervised by the Financial Services Authority based on a license from BAPEPAM & LK No.KEP-04/BL/MI/2011 dated June 15, 2011. PT Ashmore Asset Management Indonesia Tbk is officially listed in Indonesia Stock Exchange on January 14, 2020.

Fund objective and strategy

The investment objective of Investment Fund of Ashmore Dana USD Equity Nusantara is to gain capital profit in long term in US Dollar by investing in equity Securities offered through a Public Offering and/or traded at the Indonesia Stock Exchange.

Investment Policy	Fund
Equity	80% - 100%
Money Market and/or Cash Equivalent	0% - 20%

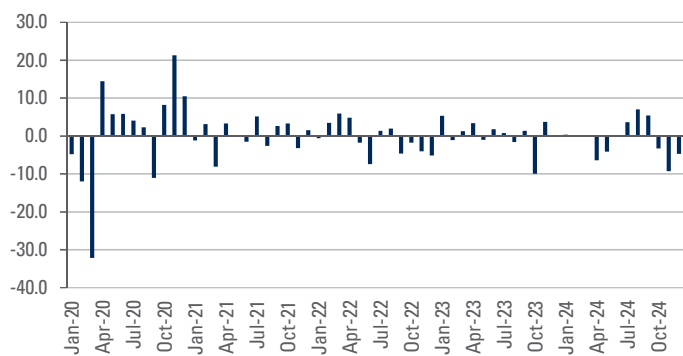
Asset Allocation	Fund
Equities	95.65%
Money Market and/or Cash Equivalent	4.35%

Performance

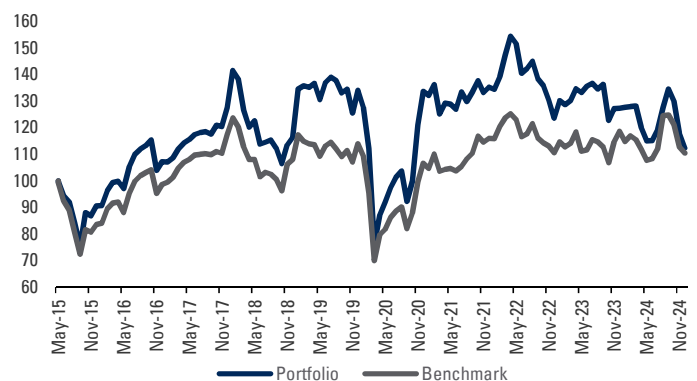
Net returns %	1 month	3 months	6 months	YTD	1 year	3 years	5 years	Since inception
Fund	-4.71	-16.48	-2.38	-11.71	-11.71	-16.93	-16.17	12.37
Benchmark	-2.03	-11.53	1.97	-6.93	-6.93	-4.80	-3.12	10.43
Excess	-2.68	-4.95	-4.36	-4.78	-4.78	-12.13	-13.05	1.94

Highest 1M Performance SI	November 2020	21.30%
Lowest 1M Performance SI	March 2020	-32.17%

Monthly Performance in the last 5 Years



Mutual Fund Investment Portfolio Performance Since Launch



Source: Bloomberg, Ashmore

Fund information			
Bloomberg USD: ASHDUEN IJ	Accumulation/Income N/A	Subscription fee Max. 2.00%	Registered for sale For registered countries, please visit www.ashmoregroup.com
ISIN USD: IDN000198009	Minimum initial investment USD 100.00	Redemption fee Max. 2.00%	Administrator HSBC, Jakarta Branch
SEDOL USD:	Subsequent Subscriptions USD 100.00	Switching fee Max. 1.00%	Investment manager PT Ashmore Asset Management Indonesia Tbk
Domicile Indonesia	Redemptions USD 100.00	Management fee Max. 3.0% per annum	Valuation Period Daily
OJK Effective Letter Reg Number S-73/D.04/2015	Maximum Number of Units offered 600,000,000.00	Custody fee Max. 0.25% per annum	

Ashmore Dana USD Equity Nusantara
Share class: USD

Benefits of Investment Products
Professional management
Potential growth of investment value
Investment diversification
Low investment cost
Easy investment liquidation

Main risk factors
Risk of economic and political condition
Risk of default
Liquidity risk
Risk of diminishing NAV of each participation unit
Risk of change of regulation
Risk of dissolution and liquidation participation unit

Top 10 holdings exposure %	Fund
Bank Central Asia Tbk Pt	8.1
Pp London Sumatra Indones Tbk Pt	6.5
XI Axiata Tbk Pt	6.2
Summarecon Agung Tbk Pt	5.6
Astra International Tbk Pt	5.5
Timah Tbk Pt	5.0
Telekomunikasi Indonesia Persero Tbk Pt	5.0
Ace Hardware Indonesia	4.5
Bank Mandiri Tbk Pt	4.4
Bank Rakyat Indonesia Persero Tbk Pt	3.8

Risk Classification*



* Referring to POJK No. 17/POJK.04/2022 concerning the Code of Conduct for Investment Managers

About Ashmore: Ashmore is a specialist Emerging Markets investment manager with over twenty years' experience in these markets and a history of consistently outperforming over the market cycle. Ashmore's constant presence in the world's Emerging Markets is anchored by local offices in Colombia, India, Saudi Arabia, Singapore, Japan, Peru, UAE, USA, and Indonesia. PT Ashmore Asset Management Indonesia Tbk was established in 2012, registered and supervised by Otoritas Jasa Keuangan under the license of BAPEPAM & LK No.KEP-04/BL/MI/2011 dated 15 June 2011 and listed at Indonesia Stock Exchange since January 2020.

Bank Custodian: PT Bank HSBC Indonesia (formerly known as PT Bank Ekonomi Raharja) has been operating in Indonesia since 1989, which is a part of HSBC Group and has obtained approval to conduct business activity as Custodian in the Capital Market sector from the Financial Services Authority (Otoritas Jasa Keuangan or "OJK"), decision Number. KEP-02/PM.2/2017 dated 20th January 2017 and therefore HSBC is listed and supervised by OJK.

In accordance with the prevailing OJK Regulations, proof of subscription, switching and redemption transaction is a legal proof of Participation Unit ownership that is issued and delivered by the Custodian Bank, via Securities Ownership Reference (AKSES) facility. Participation Unit Holders can verify the Investment Fund ownership through the website <https://akses.ksei.co.id/>.

Contacts

PT Ashmore Asset Management Indonesia Tbk

Pacific Century Place 18th Floor SCBD Lot 10, Jalan Jendral Sudirman Kav 52-53 Jakarta 12190

E: Contact-Indonesia@ashmoregroup.com

For more complete prospectus information, please access our website www.ashmoregroup.com

INVESTMENTS THROUGH INVESTMENT FUNDS CONTAIN RISKS. BEFORE DECIDING TO INVEST IN INVESTMENT FUNDS, PROSPECTIVE INVESTORS MUST READ AND UNDERSTAND THE PROSPECTUS. PAST PERFORMANCE DOES NOT GUARANTEE/REFLECT INDICATE FUTURE PERFORMANCES.

OTORITAS JASA KEUANGAN ("OJK") NEITHER APPROVED NOR DISSAPPROVED THESE SECURITIES, IT ALSO DOES NOT CONFIRM THE CORRECTNESS OR THE ADEQUACY OF THE CONTENTS OF THIS PROSPECTUS. ANY DECLARATION CONTRARY TO THESE STATEMENTS IS VIOLATING THE LAW.

INVESTMENT FUNDS ARE CAPITAL MARKET PRODUCTS AND NOT PRODUCTS ISSUED BY SELLING AGENTS/ BANKS. SELLING AGENTS OF INVESTMENT FUNDS ARE NOT RESPONSIBLE ON CLAIMS AND THE RISK OF MANAGEMENT OF INVESTMENT FUND PORTFOLIO CONDUCTED BY THE INVESTMENT MANAGER.

INVESTMENTS IN MUTUAL FUNDS ARE NOT PART OF THIRD PARTY DEPOSITS AT THE BANK AND ARE NOT INCLUDED IN THE SCOPE OF THE DEPOSIT INSURANCE PROGRAM OBJECT BY THE DEPOSIT INSURANCE AGENCY / LEMBAGA PENJAMIN SIMPANAN (LPS).

This product information summary does not replace the Investment Fund Prospectus and is prepared by PT Ashmore Asset Management Indonesia Tbk solely to provide information and does not constitute an offer to buy or request to sell. All information contained in this document is accurate. Investors are advised to seek professional opinion before making an investment decision as required. Past performance does not necessarily serve as a guide for future performance, nor is it an estimate made to give an indication of future performance or trends.

PT Ashmore Asset Management Indonesia Tbk as the Investment Manager is registered and supervised by OJK.

Marketing Communications This document is published by PT Ashmore Asset Management Indonesia Tbk, regulated by the Financial Services Authority (Otoritas Jasa Keuangan or "OJK"). This document is made in good faith by PT Ashmore Asset Management Indonesia Tbk with the intention to provide information and not as an invitation, recommendation or offer to invest or subscribe Participation Units of the Mutual Fund. Past performance is not a guarantee, indication or estimate for future performance of the Investment Fund. Any losses arising from the investment is not the responsibility of PT Ashmore Asset Management Indonesia Tbk. Prospective investors who consider subscribing Participation Unit of the Mutual Fund are encouraged to read the latest Prospectus and to obtain professional advice and expertise in legal, finance, tax and other professionals prior to deciding the investment because the material in this document is not intended to provide adequate information on investment. Information and opinions in this document are obtained from our sources; however PT Ashmore Asset Management Indonesia Tbk does not guarantee its accuracy and integrity. Estimation of results, achievements may differ materially with actual results.